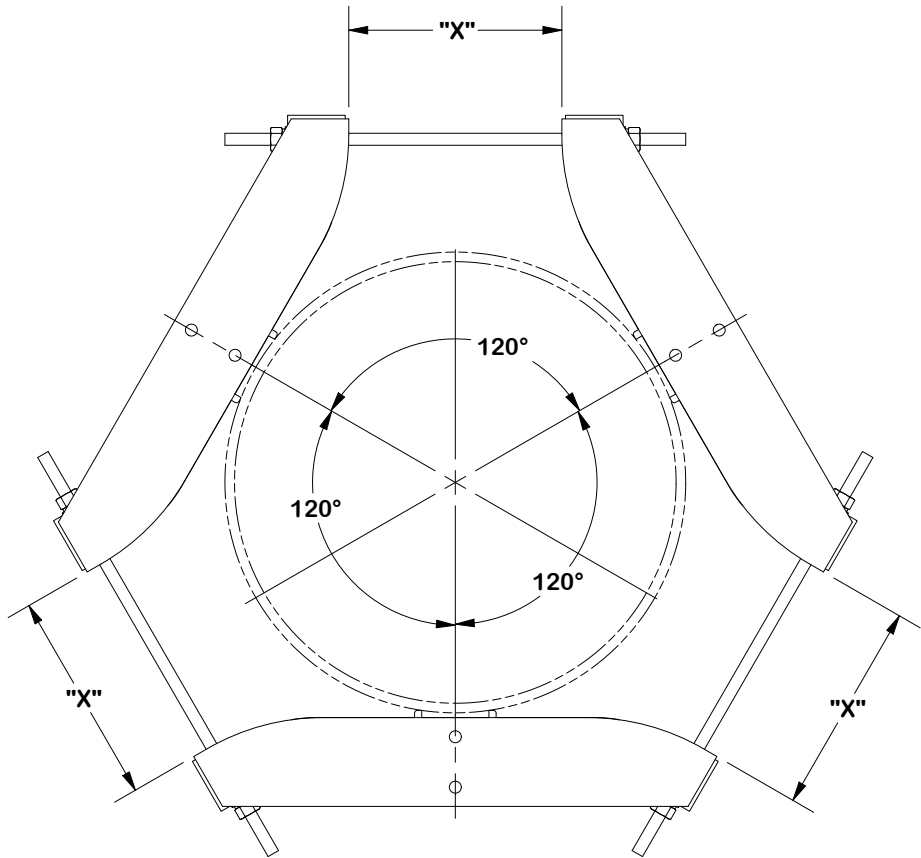
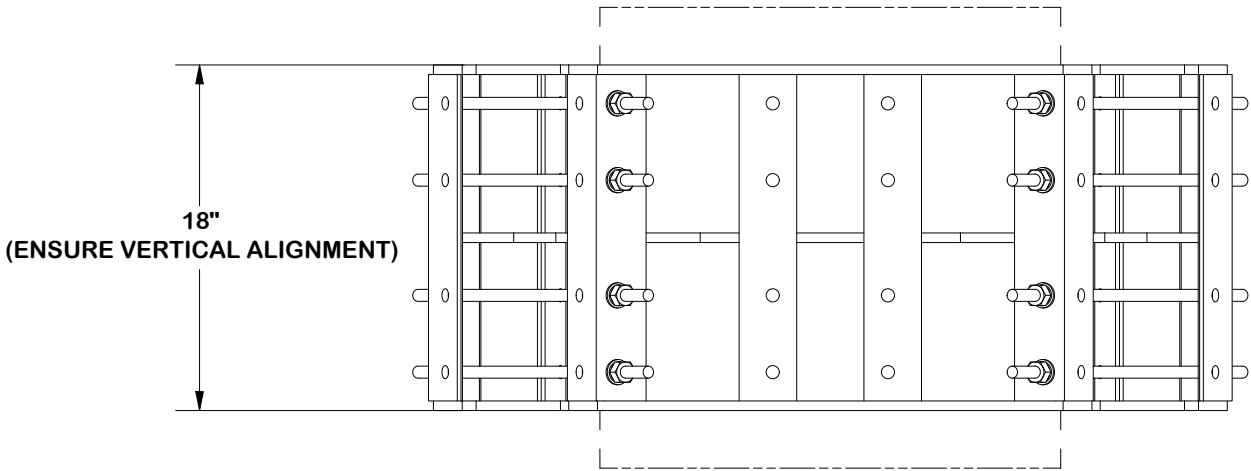
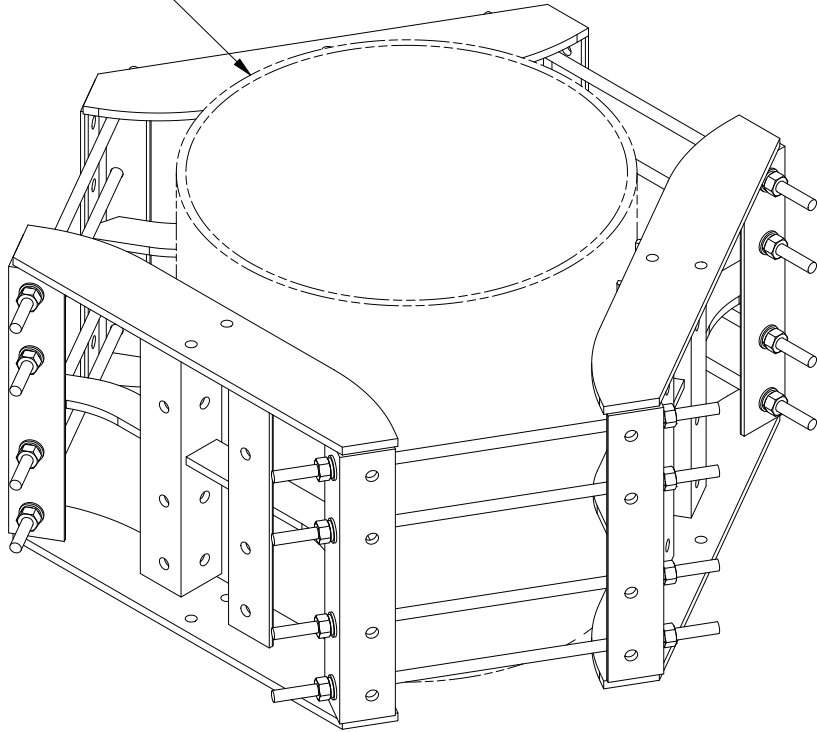




NOTE:  
ENSURE EQUAL DISTANCE  
BETWEEN BRACKETS "X"  
AND AT 120° APART

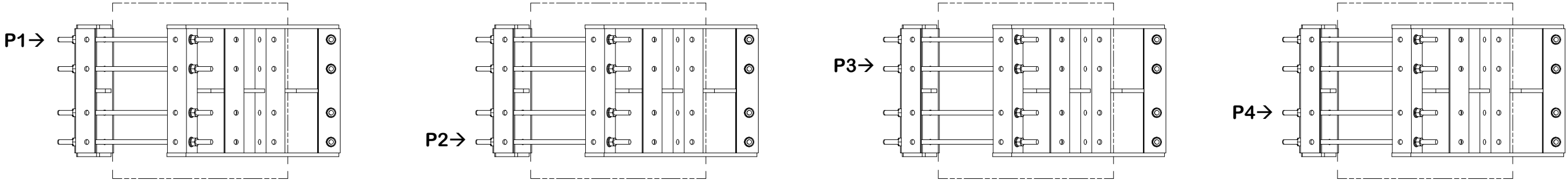


12" TO 45"  
O.D. POLE

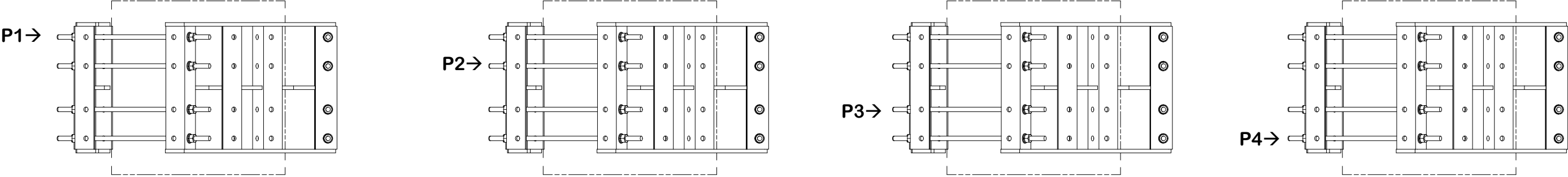


					<b>TOLERANCE NOTES</b>		DESCRIPTION  HEAVY DUTY TRI-BRACKET RING MOUNT 12" TO 45" DIAMETER POLE			<div><div><div>SITE PRO</div><div>1</div></div><div>A valmontCOMPANY</div></div> <div>Locations: New York, NY Atlanta, GA Los Angeles, CA Plymouth, IN Salem, OR Dallas, TX</div> <div>Engineering Support Team: 1-888-753-7446</div>						
A	ADDED INSTALLATION INFO				CEK	10/20/2023							TOLERANCES ON DIMENSIONS, UNLESS OTHERWISE NOTED ARE: SAWED, SHEARED AND GAS CUT EDGES (± 0.030") DRILLED AND GAS CUT HOLES (± 0.030")- NO CONING OF HOLES LASER CUT EDGES AND HOLES (± 0.010")- NO CONING OF HOLES BENDS ARE ± 1/2 DEGREE ALL OTHER MACHINING (± 0.030") ALL OTHER ASSEMBLY (± 0.060")			
REV	DESCRIPTION OF REVISIONS			CPD	BY	DATE	PROPRIETARY NOTE: THE DATA AND TECHNIQUES CONTAINED IN THIS DRAWING ARE PROPRIETARY INFORMATION OF VALMONT INDUSTRIES AND CONSIDERED A TRADE SECRET. ANY USE OR DISCLOSURE WITHOUT THE CONSENT OF VALMONT INDUSTRIES IS STRICTLY PROHIBITED.			CLASS 81	SUB 02	DRAWING USAGE CUSTOMER	CHECKED BY BMC 6/27/2017	PART NO. RM3-HD	DWG. NO. RM3-HD	2 OF 3 PAGE
REVISION HISTORY																

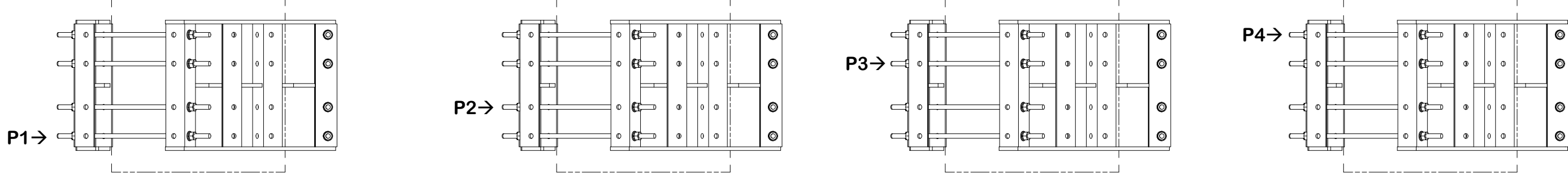
INSTALL ORDER



INITIAL TIGHTENING



FINAL TIGHTENING



					<b>TOLERANCE NOTES</b>  TOLERANCES ON DIMENSIONS, UNLESS OTHERWISE NOTED ARE: SAWED, SHEARED AND GAS CUT EDGES (± 0.030") DRILLED AND GAS CUT HOLES (± 0.030")- NO CONING OF HOLES LASER CUT EDGES AND HOLES (± 0.010")- NO CONING OF HOLES BENDS ARE ± 1/2 DEGREE ALL OTHER MACHINING (± 0.030") ALL OTHER ASSEMBLY (± 0.060")  <small>PROPRIETARY NOTE: THE DATA AND TECHNIQUES CONTAINED IN THIS DRAWING ARE PROPRIETARY INFORMATION OF VALMONT INDUSTRIES AND CONSIDERED A TRADE SECRET. ANY USE OR DISCLOSURE WITHOUT THE CONSENT OF VALMONT INDUSTRIES IS STRICTLY PROHIBITED.</small>		<div>DESCRIPTION</div> <div>HEAVY DUTY TRI-BRACKET RING MOUNT 12" TO 45" DIAMETER POLE</div>			<div><div><div>SITE PRO</div><div>1</div></div><div>A valmontCOMPANY</div></div> <div>Locations: New York, NY Atlanta, GA Los Angeles, CA Plymouth, IN Salem, OR Dallas, TX</div> <div>Engineering Support Team: 1-888-753-7446</div>				
A	ADDED INSTALLATION INFO				CEK	10/20/2023	CPD NO.	DRAWN BY CEK 6/5/2017		ENG. APPROVAL		PART NO.  RM3-HD		3 OF 3 PAGE
REV	DESCRIPTION OF REVISIONS			CPD	BY	DATE	CLASS 81	SUB 02	DRAWING USAGE CUSTOMER		CHECKED BY BMC 6/27/2017		DWG. NO.  RM3-HD	
REVISION HISTORY														